

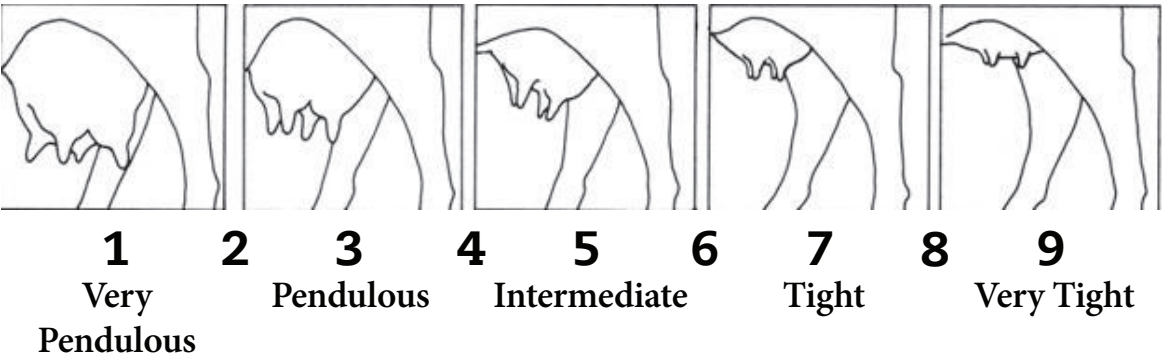


UDDER & TEAT SCORING

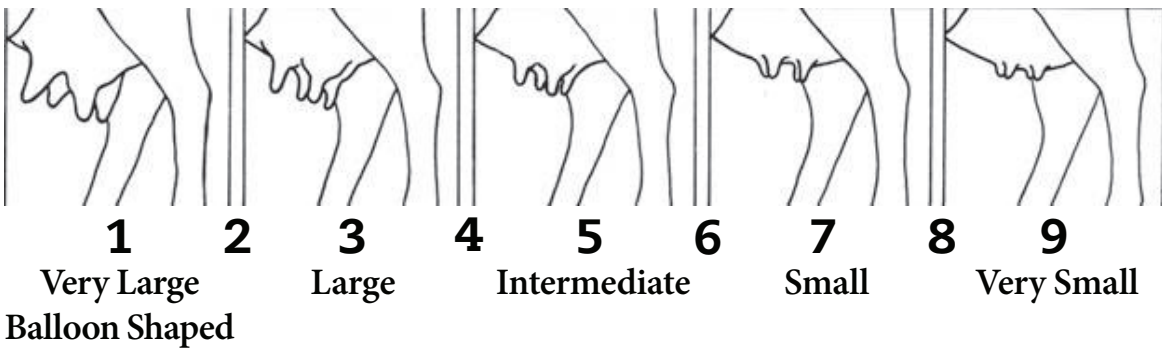
Udder quality is important to the longevity of a cow and calf performance. Udder and teat soundness ensures the successful transfer of passive immunity through colostrum, and ensures the appropriate milk flow to optimize calf performance in addition to reducing labour. Being a heritable trait, it becomes important for breeders to report udder scores to the Canadian Hereford Association to be used in genetic evaluations so that producers have genomically enhanced selection tools at hand and the ability to measure and promote problem free udders. Udder and teat EPDs are reported on the scoring scale. Differences in sire EPDs, predict the ‘daughters’ characteristics when managed in the same environment. For example sire A has an EPD of 0.4 for test size, and sire B has an EPD of -0.1, the difference is 0.5 of a score. You would expect sire A’s daughters to measure half a score smaller in teat size than sire B’s in the same environment.

NEW SCORING SCALE 1-9

UDDER SUSPENSION



TEAT SIZE



How To SCORE:

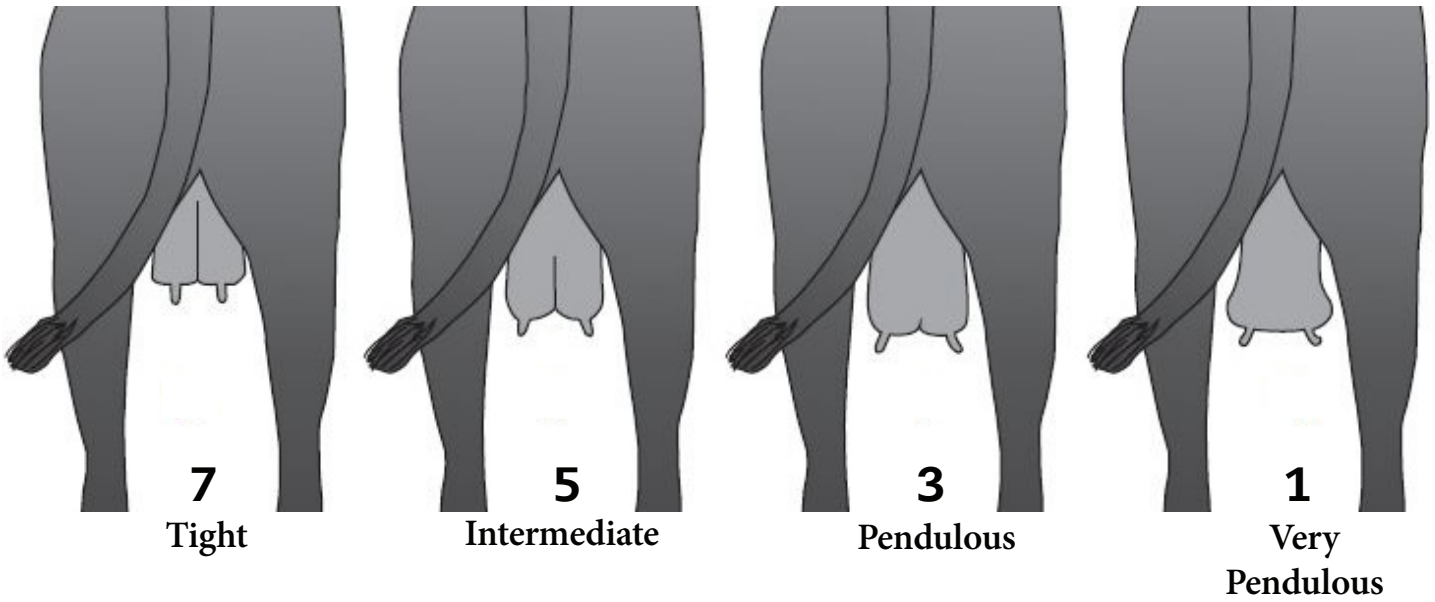
- 2 score system, the first score being on udder suspension and the second on teat size
- Cow is scored on her weakest quarter and within 24 hours of calving
- Should have the same person scoring throughout the calving season for consistency
- Try to score the cows as close to the scale diagrams as possible
- Score your cows honestly, your customers will thank you for it

MAKE UDDER & TEAT SCORING PART OF YOUR PERFORMANCE ROUTINE

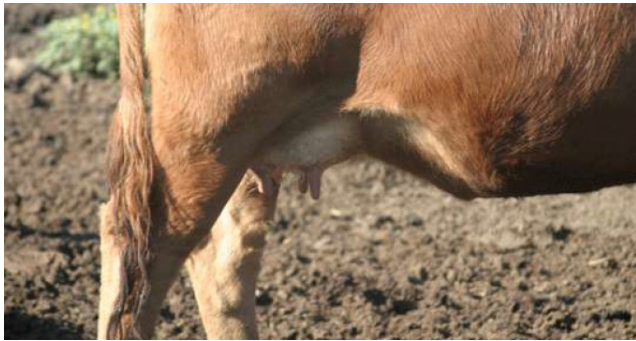


UDDER SUSPENSION FROM BEHIND THE COW

Illustration courtesy University of Nebraska-Lincoln Extension



EXAMPLES



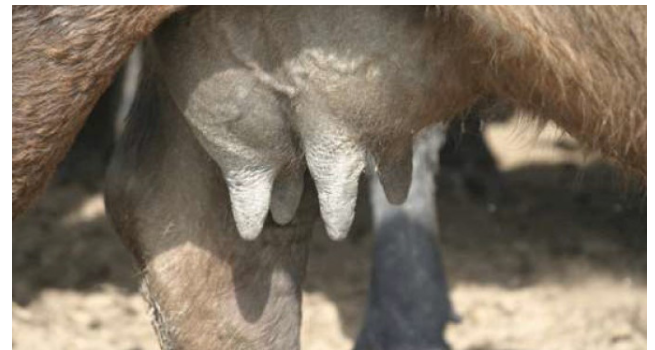
Score: 9,8



Score: 8,7



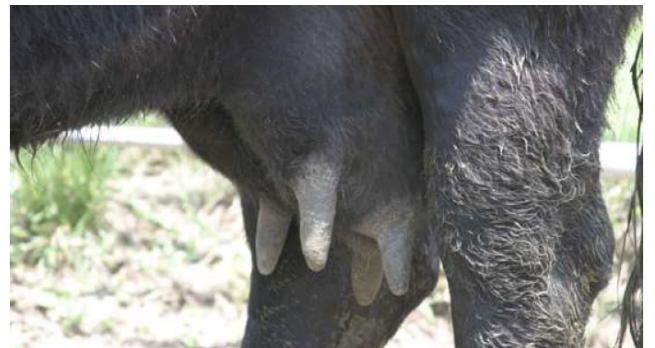
Score: 6,6



Score: 5,5



Score: 4,4



Score: 3,3