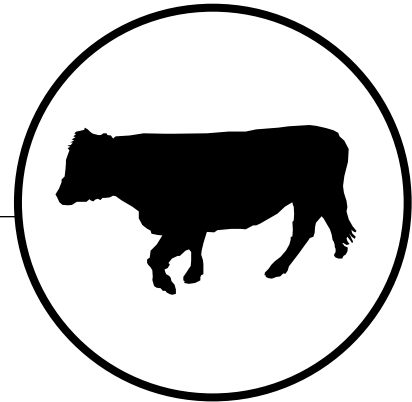


# What's the Score: Beef Cow

BODY CONDITION SCORING (BCS) GUIDE

---



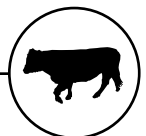
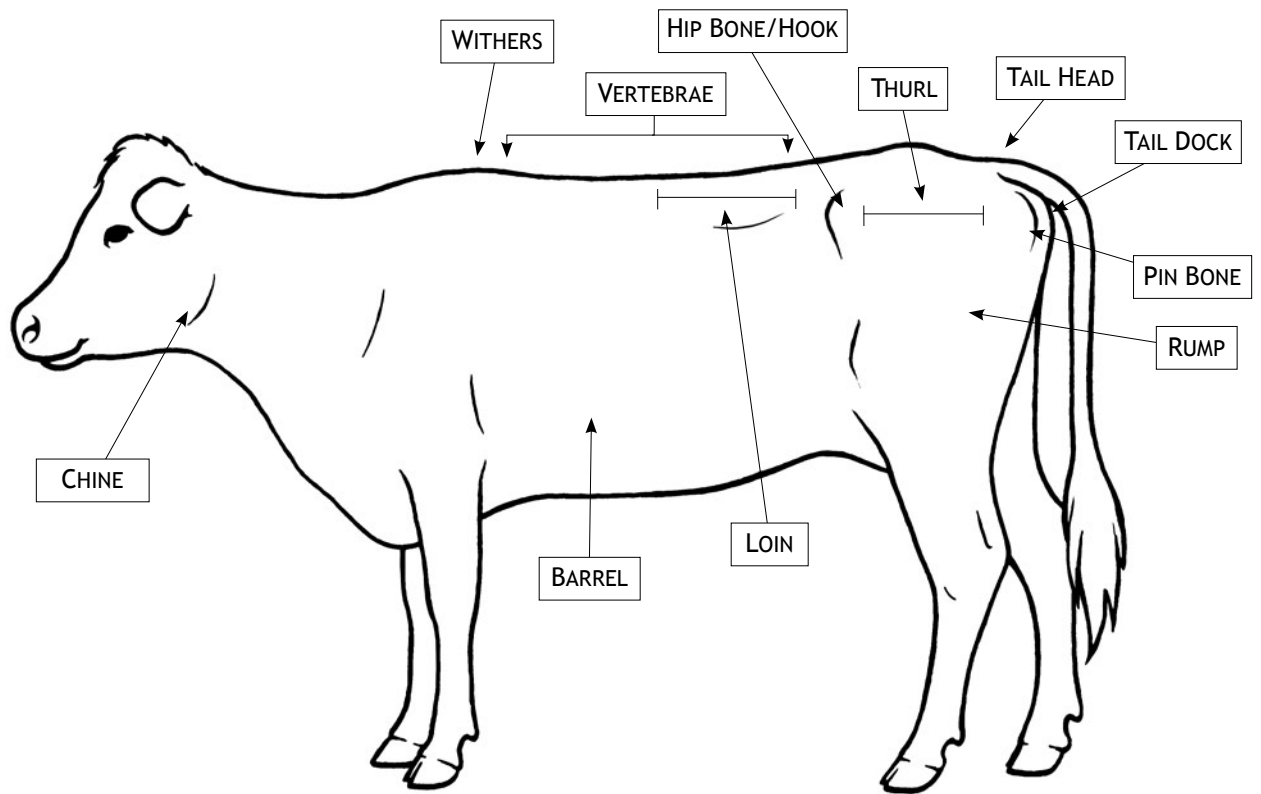
## CONTENTS

---

- Page 2:** Labelled illustration of a Beef Cow.
- Page 3:** Cross section of the loin area.
- Page 4:** Overview of all the body condition scores for a Beef Cow. Each body condition score will have an illustration to match and describe what you should be looking for in determining the body condition score of your animals.

## LABELLED ILLUSTRATION OF A BEEF COW

Illustration of a Beef Cow with a BCS score of 3.



## CROSS SECTION OF THE LOIN AREA

Generic Cross Section of the Loin Area.

---

BCS 1 \_\_\_\_\_



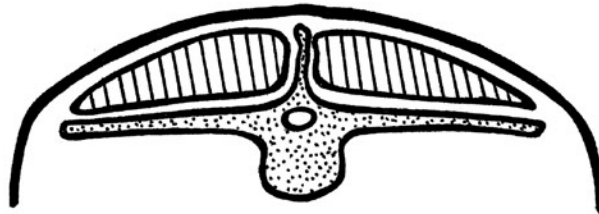
BCS 2 \_\_\_\_\_



BCS 3 \_\_\_\_\_



BCS 4 \_\_\_\_\_



BCS 5 \_\_\_\_\_



## BODY CONDITION SCORES FOR BEEF COWS

Overview of all the body condition scores for Beef Cows

---

### BCS 1:

#### ENTIRE ANIMAL

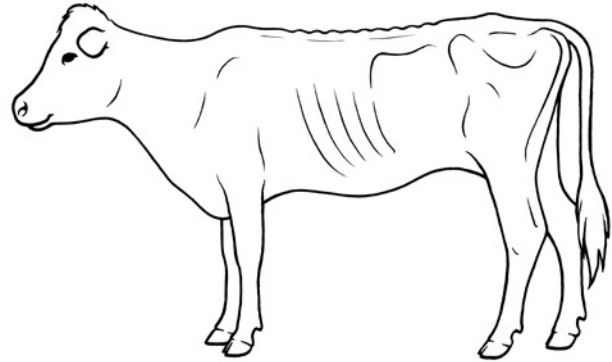
- Extremely thin
- No fat in brisket or tail docks
- All skeletal structures are visible
- No muscle tissue evident
- No external fat present
- Dull hair
- Survival during stress doubtful

#### BACK BONE

- Individual vertebrae well defined, sharp
- Can place fingers between each vertebrae

#### SHORT RIBS

- Visually prominent
- No fat present
- Very sharp to the touch



### BCS 2:

#### ENTIRE ANIMAL

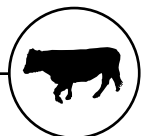
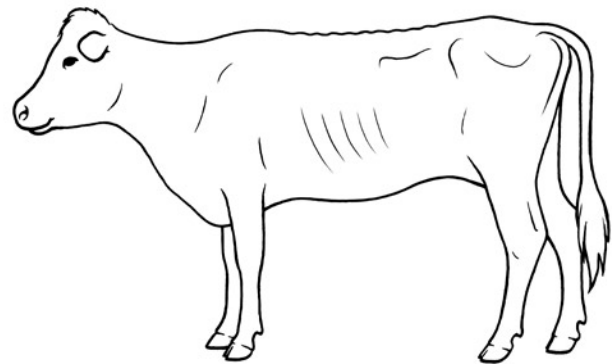
- Thin
- Upper skeleton prominent (vertebra, hips, pin bones)
- Muscle tissue evident, but not abundant,
- Some tissue cover around the tail dock, over the hip bones and the flank

#### BACK BONE

- Individual vertebrae can be felt, but not as sharp
- Can't place fingers between vertebrae

#### SHORT RIBS

- Feel individual ribs, sharp rather than very sharp.
- Identify individual ribs visually



### BCS 3:

---

#### ENTIRE BODY

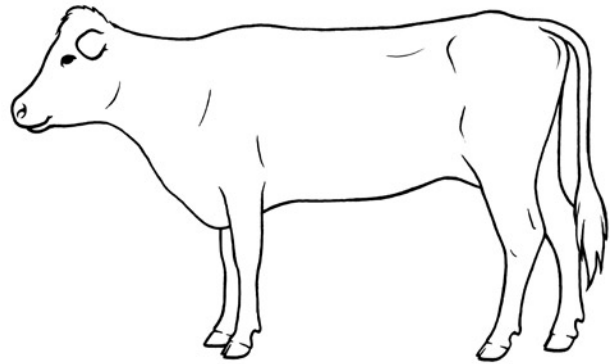
- Ideal flesh for calving
- Ribcage only slightly visible
- Hooks and pins visible, but not prominent
- Muscle tissue nearing maximum
- Fat deposit behind shoulder obvious
- Fat in brisket area
- Tail docks easily felt

#### BACK BONE

- Somewhat defined
- Difficult to feel top of vertebrae

#### SHORT RIBS

- Completely covered with fat, beginning to spread over rump
- Individual ribs only felt with firm pressure



### BCS 4:

---

#### ENTIRE BODY

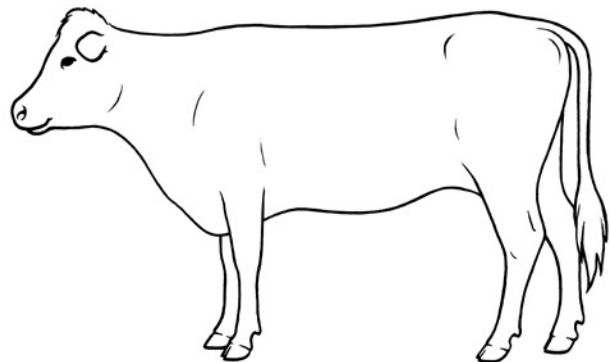
- Skeletal structure difficult to identify
- Obvious fat deposits behind shoulder, and at tail head
- Fat on brisket and over shoulder

#### BACK BONE

- Flat appearance to the top line
- Can't feel individual vertebrae

#### SHORT RIBS

- Folds of fat beginning to develop over the ribs and thighs
- Can't feel individual ribs, even with firm pressure



## BCS 5:

---

### ENTIRE BODY

- Obese
- Flat appearance dominates
- Brisket heavy
- Bone structure not noticeable, “blocky” appearance
- Tail head and hip bones almost completely buried in fat and folds of fat

### BACK BONE

- Flat back
- Can't feel backbone

### SHORT RIBS

- Completely covered by fat
- Mobility impaired by large amounts of fat

